



What is a Community Forest?

- A community forest can be described as a forest area managed by a local government, community group, First Nation or community-held corporation for the benefit of the entire community (www.bccfa.ca).
- A Community Forest Agreement (CFA) in BC is a long-term agreement to manage a specific area of public forest land.
- CFAs are granted only to legal entities representing community interests.
- CFAs give the holder exclusive rights to harvest timber on a specific land base (area based).
- Community Forests are managed to reflect local community values and priorities.
- There are currently 58 community forests operating across British Columbia.

Benefits include:

- Greater local control of forest stewardship and timber harvest decisions including consideration of community values such as recreation, wildlife, watersheds, viewscapes, cultural and spiritual sites.
- Support for local economies and livelihoods. Profits remain local. Harvesting operations can provide a source of revenue for local priorities and community initiatives.
- Strengthening relationships between the community of Squamish and Squamish Nation.
- Greater awareness of forest management among members of the public.
- Forest planning can reflect locally determined objectives and interests.
- Local-level decision making that leads to locally appropriate decisions and improves the incentives to consider the long-term benefits of sustainable forest management.
- CFAs include the option to manage for commercial harvest of botanical/non-timber forest products.
- Note: Trail development is still subject to provincial authorization.





Squamish Community Forest Area Overview



Features of the proposed Community Forest area

- Entirely within the Traditional Territory of Squamish Nation
- Within the Consultative Areas of Tseil-Waututh Nation and Musqueam Nation
- Located mostly on hillsides east and south of town. Areas include:
 - Shannon Creek, Raffuse Creek, Stawamus River, Mashiter Creek, south of Alice Lake, Ring Creek, lower Mamquam River
- Many highly valued recreation areas (e.g. biking, walking/hiking and running trails, top portion of Sea to Sky Gondola)
- Portions of Mashiter Community Watershed and Stawamus Community Watershed
- Part of the Community Forest is within the District of Squamish municipal boundary
- Squamish Nation cultural sites
- Portions of Sky Pilot Wildland area
- Designated Old Growth Management Areas
- Wildlife Habitat Areas for Marbled Murrelet
- Designated Ungulate Winter Ranges for Mountain Goat and Black-tailed Deer
- Forest/urban interface areas – important for community wildfire protection
- Within the Sea to Sky Scenic Area
- Overlaps numerous water licences and mineral tenures
- Portions of six trapline licences
- Several commercial recreation tenures





Squamish Community Forest History and Next Steps



1945 - The concept of community forestry first developed in BC when Gordon Sloan, in the 1945 Royal Commission on the Forest Resources of British Columbia, recommended that municipalities manage local forests.

1998 - BC Community Forest Pilot Program initiated, which has evolved into the current full program with 58 community forests operating across BC.

2002 - BC Community Forest Association formed.

2005 - The BC Ministry of Forests and Range offers the District of Squamish the opportunity to submit a formal application for a community forest with an annual allowable cut of 10,000m³.

2006 – Presentation to council by JCH Forestry Consulting about the benefits of a community forest in Squamish and expressing concerns about the viability of a 10,000m³ annual allowable cut.

2006 to present - District of Squamish staff engages with Ministry of Forests, Land and Natural Resource Operations (FLNRO), the BC Community Forest Association, Squamish Nation, Squamish Forestry (a local forestry operator owned by Squamish Nation), BC Timber Sales and the Resort Municipality of Whistler on how to move forward with the Community Forest in Squamish.

2011 - The District and Squamish Nation agreed in the Intergovernmental Cooperation Accord Agreement to “work together to create a joint Community Forest”. Squamish Nation agreed to contribute 10,000m³/year of timber volume from its Forest Licence to allow the Community Forest to increase in size to 20,000m³/year harvest.

2014 - Partnership agreement proposed between Squamish Nation and the District of Squamish for joint management of a Community Forest. Letter of Intent signed between the parties.

2017 - Invitation to co-apply for a CFA is extended to Squamish Nation and the District of Squamish by the BC Ministry of Forests, Lands, Natural Resource Operations and Rural Development .

2019 - Co-Governance agreement signed. Squamish Community Forest Corporation formed, to hold and oversee management of a community forest. SCFC is a Limited Partnership between Squamish Nation and the District of Squamish. Information Open Houses held for general public (May and June 2019) and Squamish Nation (June 2019). Stakeholder meetings. Management Plan drafted.

Next steps:

- Complete the formal application package and submit it to the BC Ministry of Forests, Lands, Natural Resource Operations and Rural Development
- Prepare a Forest Stewardship Plan
- Develop an operational/harvesting plan





Squamish Community Forest Governance



The Community Forest Agreement will be held by the **Squamish Community Forest Limited Partnership**— a collaboration between Squamish Nation and District of Squamish

Key principles that guided creation of the partnership

- The District and Squamish Nation each contribute 10,000m³ of annual allowable cut.
- The District and Squamish Nation are not responsible for operating costs or required to provide human resources.
- The District and Squamish Nation will receive profits from the Community Forest.
- The Community Forest will be managed by a forestry management company.
- The Community Forest will be operated to enhance local economic development while providing increased local input into the planning of the area to enhance the recreational opportunities.

Community Forest management principles

The Community Forest will be managed in accordance with the following principles:

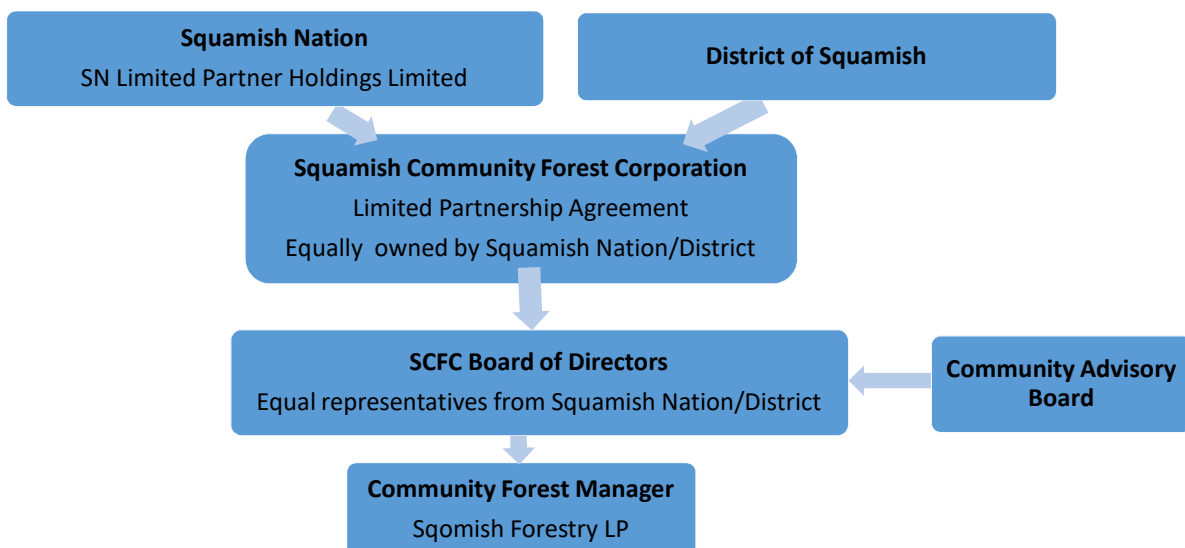
(a) forestry operations will be operated to show a profit, and demonstrate the value and viability of forestry to the District of Squamish and the Squamish Nation;

(b) ...forest planning and operations will be conducted to maximize long-term security of employment and contracting opportunities in preference for District of Squamish and local residents including Squamish Nation members;

(c) forest planning and operations will follow sustainable forestry practices;

(d) forest planning and operations will respect the land use plans and the cultural, recreational, educational and aesthetic values/objectives of both the Squamish Nation and the District of Squamish, including without limitation management of viewscapes, recreational trails and riparian values; and

(e) decisions will be made by consensus where possible, recognizing both cultural and sustainability interests of the Partners.





Squamish Community Forest Management Plan



A Management Plan is required as part of the application for the Community Forest Agreement.

The purposes of the Management Plan are:

- To provide the broad direction and general management approach
- To link the community and their values to management of the community forest
- To establish an annual allowable cut.

The MP will reflect values of both Squamish Nation and Squamish community members.

It will reflect the Squamish Nation Land Use Plan and relevant District of Squamish policies.

The MP must be consistent with forestry legislation and higher level plans including the established objectives from the Sea to Sky Land and Resource Management Plan.

Elements of the Management Plan:

- Guiding principles and Values
- Social, economic and broad resource management goals and objectives
- Inventories and management approach for non-timber and timber resource values in the community forest area, including:

Soils	Forest Health Factors
Biogeoclimatic Zones	Wildfire Risk Management
Biodiversity	Silviculture
Old Growth	Terrain
Wildlife	Roads
Species at Risk	Recreation
Water, Riparian Areas and Fish Habitat	Visual Quality and Scenic Areas
Cultural and Archaeological Values	Other tenure holders and land users

- Allowable Annual Cut proposal and rationale
- Measures to Identify and Consult with all land users and stakeholders in the community forest area
- Measures to Consult with First Nations
- A plan for annual reporting to the community



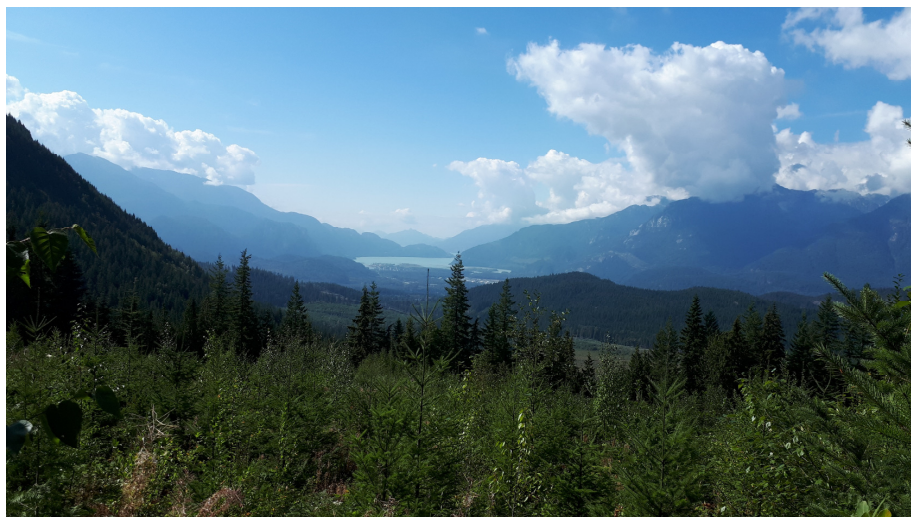


Squamish Community Forest 2020 Update



What's new since the Open Houses in May and June 2019?

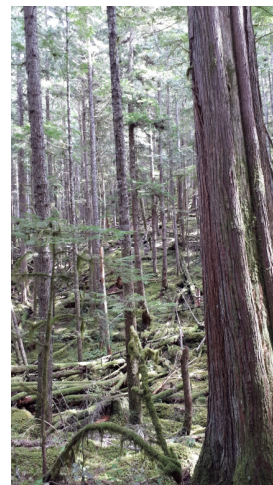
- Compiled input from 2019 open houses, questionnaires and discussions and integrated into draft Management Plan, including list of Values and Goals
- Held meetings with stakeholder groups including Squamish Off-Road Cycling Association (SORCA), Squamish Access Society, Squamish Dirt Bike Association, 99 Trials Association, Ring Creek residents, Sea to Sky Gondola
 - Discussed specific values and committed to ongoing processes for management of key values
- Created Ring Creek Residents' Planning Unit
- Negotiated for a larger landbase – area expanded to include upper Stawamus River
- Developed Draft Management Plan (in process)
- Identified Values:
 - Balance (between economic, environmental and social goals)
 - Respect for all interests and resource values
 - Ecological and financial sustainability
 - Environmental sustainability
 - Community engagement and social licence
 - Educational opportunities
 - Cultural values and sites
 - Outdoor recreation
 - Squamish Nation cultural values
 - Cooperation





Squamish Community Forest Goals/Commitments for Years 1-5

- Establish and fine tune communications and engagement processes with First Nations, community groups and stakeholders
- Establish a Community Advisory Board composed of representatives of diverse community interests
- Conduct a Timber Supply Analysis (a detailed inventory of timber and non-timber values) and confirm the long term sustainable harvest rate in light of community values and priorities
- Enter into a trails master planning process with all interested groups, with the aim to develop a trails management strategy, including inventory, operational guidelines and phased harvest plans in the context of trails
- Update the Stawamus River and Mashiter Creek Integrated Watershed Management Plan (dated 1998) to bring it into the current context.
- Enter a process with Ring Creek residents to guide management within the Ring Creek Residents' Planning Unit
- Explore community values around botanical forest products such as mushrooms, berries, cultural botanical values
- Develop a wildfire risk integration strategy for the Community Forest
- Review and update the Visual Landscape Inventory and Visual Quality Objectives for viewscapes
- Work towards a 3-5 year harvest plan
- Host two public open houses per year for reporting and feedback





Squamish Community Forest Community Engagement and Communications

How will community values and feedback be considered?

- Community members are invited to share what values, priorities and goals should guide management of the community forest.
- A management plan is prepared reflecting community goals and values and establishing the annual allowable cut (timber harvest level).
- Development of a strategy for ongoing communication with and outreach to local stakeholders and First Nations.
- Planned creation of a Community Advisory Board composed of representatives from the community.
- Planned development of working guidelines e.g. for trail planning and management.
- Annual reporting to the community is required.

